



AM11-45 Series

MERV 11 Media Air Cleaners

Contents

Specifications 2

Standard Features

- Includes MERV 11 media filter, rated at 492 feet/minute, removes airborne particles down to 0.3 micron
- Filter design features a structured density gradient for sustained efficiency over the life of the filter
- Filter material is constructed of cellulose-free, hydrophobic polyolefin fibers
- Extra deep, 4 1/2 inch pleated filter
- Filter has a tight cabinet fit ensuring minimal air bypass
- Quick and easy filter change
- Dual gasketed door for proper air seal
- Filter frame designed with dual pull tabs for easy removal
- Heavy duty, 20 gauge, pre-painted, corrosion resistant cabinet and door
- All cabinet mounting holes slotted and designed to lineup with original equipment flanges for time saving installation
- Reversible air flow - Horizontal or Vertical

Description

The Clean Comfort™ AM11 Series of MERV 11 media air cleaners for residential applications helps remove a wide range of airborne particles as small as 0.3 micron.

- Intuitively designed with outer dimensions that match original equipment furnace and air handler cabinets for quick installation

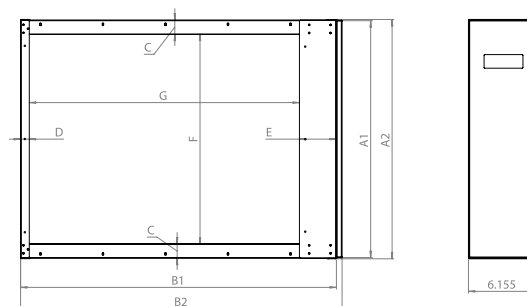


X-PROTECT

* Complete warranty details available on www.nexgenairandheat.com. To receive the Lifetime Unit Replacement Warranty (good for as long as you own your home) and 10-Year Parts Lifetime Warranty, in order to qualify for lifetime replacement warranty you need to be part of the X Protection Family. Membership must be current and up-to-date.

SPECIFICATIONS							
	Furnaces				Air Handlers		
MODEL	AM11-1425-FA	AM11-1625-FB	AM11-2025-FC	AM11-2525-FD	AM11-1620-AB	AM11-2020-AC	AM11-2520-AD
House Size Area	Up to 2400 ft ² (223 m ³)	Up to 3000 ft ² (279 m ³)	Up to 4000 ft ² (372 m ³)	Up to 4000 ft ² (372 m ³)	Up to 2400 ft ² (223 m ³)	Up to 3000 ft ² (279 m ³)	Up to 4000 ft ² (372 m ³)
Airflow	Up to 1200 CFM (2039 m ³ /hr)	Up to 1400 CFM (2379 m ³ /hr)	Up to 2000 CFM (3398 m ³ /hr)	Up to 2000 CFM (3398 m ³ /hr)	Up to 1200 CFM (2039 m ³ /hr)	Up to 1400 CFM (2379 m ³ /hr)	Up to 2000 CFM (3398 m ³ /hr)
Duct Size	14 x 25 in (35.6 x 63.5 cm)	16 x 20 in (40.5 x 63.5 cm)	25 x 20 in (63.5 x 51 cm)	25 x 25 in (63.5 x 63.5 cm)	16 x 20 in (40.5 x 51 cm)	20 x 20 in (51 x 51 cm)	25 x 20 in (63.5 x 51 cm)
Unit Weight	17 lbs. (7.7kg)	18 lbs. (8.2kg)	20 lbs. (9.1kg)	21 lbs. (9.5kg)	17 lbs. (7.7kg)	19 lbs. (8.6kg)	20 lbs. (9.1kg)
Pressure Drop	0.07in. w.g. @ 246 fpm	0.06in. w.g. @ 246 fpm	0.06in. w.g. @ 246 fpm	0.05in. w.g. @ 246 fpm	0.07in. w.g. @ 246 fpm	0.07in. w.g. @ 246 fpm	0.06in. w.g. @ 246 fpm
	0.21in. w.g. @ 492 fpm	0.19in. w.g. @ 492 fpm	0.19in. w.g. @ 492 fpm	0.15in. w.g. @ 492 fpm	0.21in. w.g. @ 492 fpm	0.20in. w.g. @ 492 fpm	0.19in. w.g. @ 492 fpm
MERV Rating	11	11	11	11	11	11	11
Filtration Efficiency E1 (0.3 - 1.0 micron)	30.10%	26.00%	33.50%	33.50%	30.10%	34.30%	33.50%
Filtration Efficiency E2 (1.0 - 3.0 micron)	66.60%	65.5%	66.00%	66.00%	66.60%	66.70%	66.00%
Filtration Efficiency E3 (3.0 - 10.0 micron)	91.10%	85.4%	89.60%	89.60%	91.10%	89.60%	89.60%

DIMENSIONS (in)									
MODEL	A	A2	B1	B2	C	D	E	F	G
AM11-1425-FA	14.1	15.0	27.9	28.5	0.8	0.8	3.3	12.5	23.9
AM11-1620-AB	17.5	17.6	21.0	21.7	1.5	0.8	1.8	14.5	18.5
AM11-1625-FB	17.5	17.6	27.9	28.5	1.5	0.8	3.3	14.4	23.8
AM11-2020-AC	21.0	21.1	21.0	21.7	1.3	0.8	1.8	18.5	18.5
AM11-2025-FC	21.0	21.1	27.9	28.5	1.3	0.8	3.3	18.5	23.9
AM11-2520-AD	25.1	26.0	21.0	21.7	1.8	0.8	1.8	21.4	18.5
AM11-2525-FD	25.1	26.1	27.9	28.5	1.1	0.8	3.3	23.0	23.8



Replacement Media Filters

	Air Cleaner Model #	Replacement Filter Part #
Furnaces	AM11-1425-FA	AMP-11-1425-45
	AM11-1625-FB	AMP-11-1625-45
	AM11-2025-FC	AMP-11-2025-45
	AM11-2525-FD	AMP-11-2525-45
Air Handlers	AM11-1620-AB	AMP-11-1620-45
	AM11-2020-AC	AMP-11-2020-45
	AM11-2520-AD	AMP-11-2025-45

Replacement filters are packaged 5 per box. Filter should be changed once or twice a year based on conditions within the home.