

NEXGEN
VRF



NEXGEN® VRF SYSTEMS

NEXGEN
AIR CONDITIONING • HEATING • PLUMBING



NEXGEN® MINI-VRF MAKES MULTI-ZONE COMFORT EASY AND EFFICIENT.

Available in 3- to 5-ton configurations, with options to control up to 9 zones, NexGen® Mini-VRF enhances comfort without adding complication. All systems offer energy advantages for a wide range of single-phase applications. Our **true 5-ton system is lighter and more compact than any other system in its class***, so you can offer customers cost-saving heating and cooling performance that doesn't compromise on space.

SMALL BUSINESSES

Every office and common area can enjoy its own individual temperature control, and businesses as a whole can realize operational cost savings.

PREMIUM RESIDENCES

Offering multi-zone temperature control that's efficient and quiet, NexGen Mini-VRF is a commercial product that's also ideally suited to large custom homes.

ASSISTED-LIVING FACILITIES

NexGen Mini-VRF systems are compatible, interchangeable and adaptable to meet the needs of assisted-living and wellness facilities.

SERVICE ESTABLISHMENTS

For stores and other point-of-service businesses, NexGen Mini-VRF can eliminate temperature swings, even as heating and cooling demands change throughout the day.

NEXGEN MEANS EFFICIENT, FEATURE-RICH EQUIPMENT.
 NEXGEN MINI-VRF IS NO EXCEPTION.

Mini-VRF outdoor units are designed for efficient performance in even the harshest climates. Indoor units offer multiple installation options, and are engineered to offer higher energy savings. Every component meets or exceeds our exacting standards.



HIGH EFFICIENCY

Inverter technology allows the compressor to adjust its speed based on heating and cooling demand to maximize energy efficiency. Energy consumption can be measured with a third-party pulse meter.

- SEER of up to 19.2
- HSPF of up to 11.4

COMPACT, LIGHT AND QUIET

A low-profile height of only 52-1/4" and width of 35-3/8" make the systems suitable for most architectural design requirements. Indoor units have a specially engineered fan blade design that optimizes airflow and keeps sound levels as low as 23 dBA. Outdoor sound levels can be as low as 41 dBA.

CUSTOMIZABLE COMFORT

NexGen Mini-VRF can be easily integrated with the largest programmable touchscreen controller in the industry. The 7" screen with full-color display makes it easy to set temperatures for up to 9 different zones, create customized heating and cooling schedules and troubleshoot.

MINI-VRF SYSTEMS PERFORMANCE SPECIFICATIONS

NOM. TON	MODEL	CAPACITY (BTU/H)	COOLING DATA				HEATING DATA			PHYSICAL DATA		Operation Range
			SEER		EER		CAPACITY (BTU/H)	HSPF		DIMENSIONS H X W X L (IN.)	NET WT. (LBS.)	HEATING/COOLING
			Ducted	Non-Ducted	Ducted	Non-Ducted		Ducted	Non-Ducted			
3	VPB036H4M-3P	36,000	17.8	19.2	11.9	12.1	40,000	10.4	11.4	52-1/4 x 35-3/8 x 13-1/4	220	-4°F to 80°F (HEATING)
4	VPB048H4M-3P	48,000	17.8	19	10.4	11	52,500	10.5	11			5°F to 118°F (COOLING)
5	VPB060H4M-3P	60,000	17.6	18.8	9.3	9.5	66,000	10.5	10.6			



INDOOR UNITS

NexGen® Mini-VRF systems include a wide selection of indoor units, each offering a different form factor to accommodate different building designs and construction needs. Every indoor unit contains smart features to increase efficiency and functionality:

AUTO RESTART

Restores operation after power failure.

AUTO ADDRESSING

Mini-VRF systems have the optional ability to automatically assign indoor unit addresses upon startup.

DRY MODE

Indoor units operate with greater humidity control and comfort.

WASHABLE FILTER

Helps preserve indoor air quality while reducing waste.

BUILT-IN DRY CONTACT RELAYS

For controlling 3rd party devices, such as auxillary heat.

PRE-HEAT FUNCTION

Prevents air from circulating during heating mode until the indoor coil has sufficiently warmed.

REMOTE ON/OFF

Provides convenience and energy savings.

ERROR STATUS

Alerts the user if a fault is detected or maintenance is needed.





**VWMB
WALL MOUNT**

**FLEXIBLE
INSTALLATION**

Refrigerant piping can be routed to the left, right or rear

AUTO-SWING LOUVER

Automatically redirects air based on mode selected

QUIET OPERATION

Noise levels as low as 29 dB



**V22B
COMPACT 360°
CASSETTE**

360° AIR OUTLET

Provides uniform temperature distribution

COMPACT CASING

Fits directly into a lay-in ceiling grid, while reducing installation space requirements above the ceiling

**INTEGRAL
CONDENSATE PUMP**

Removes moisture quickly and conveniently



V33B 360° CASSETTE

360° AIR OUTLET

Provides uniform temperature distribution

**OUTSIDE AIR
CONNECTION**

Allows ventilation air to be induced directly into the unit

**INTEGRAL
CONDENSATE PUMP**

Removes moisture quickly and conveniently

ECM MOTOR

For maximum energy efficiency



**VOWA ONE WAY
CASSETTE**

**INTEGRAL
CONDENSATE PUMP**

Removes moisture quickly and conveniently

ECM MOTOR

For maximum energy efficiency

QUIET OPERATION

Noise levels as low as 29 db



**VCFB
CEILING AND
FLOOR MOUNT**

**FLEXIBLE
INSTALLATION**

Installs either vertically or horizontally

**VERTICAL AND
HORIZONTAL
AUTO SWING**

Ensures better airflow distribution

**COMPACT
INSTALLATION**

Less than 8.5" (216mm) in height



**VHIB
HIGH-STATIC
DUCTED**

HIGH STATIC PRESSURE

Support external static pressure up to 1"

LOW PROFILE HEIGHT

For space-saving applications

**OPTIONAL
CONDENSATE PUMP**

Removes moisture quickly and conveniently



**VMDB
MEDIUM-STATIC
DUCTED**

COMPACT INSTALLATION

A height of only 8.25" (210mm) makes this unit ideal when space above the ceiling is limited

**INTEGRAL
CONDENSATE PUMP**

Removes moisture quickly and conveniently

ECM MOTOR

For maximum energy efficiency



**VVCB
VERTICAL AIR
HANDLING UNIT**

ECM MOTOR

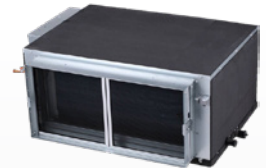
For maximum energy efficiency

MULTI-POSITION

Install vertically or in horizontal-right or horizontal-left orientations for maximum flexibility

OPTIONAL ELECTRIC HEAT

Up to 20kW



**VOSB OUTSIDE
AIR DUCT**

**DISCHARGE TEMPERATURE
CONTROL**

For maximum comfort control

**BUILT IN DRY CONTACT
RELAYS**

Supports 3rd party devices such as pre-heat, dampers, and CO2 sensors

HIGH STATIC PRESSURE

Support external static pressure up to 1"

CONTROLS

NexGen® Mini-VRF equipment is flexible in its comfort control, and its applications. With multiple control options and accessories available, it can be customized to create an ideal environment in every room, in any season. NexGen VRF Controls provide powerful control of NexGen VRF systems with a sleek, intuitive interface.



VRF WI-FI CONTROLLER

The new NexGen VRF Wi-Fi Controller is designed to meet your needs for performance, convenience, and flexibility. It is compatible with NexGen VRF and Mini-VRF units making it ideal for either light-commercial or residential applications. The Controller works with the NexGen VRF Application, enabling remote command and control.

- 4" color IPS touch screen
- Wi-Fi connectivity
- Remote operation via mobile app
- Schedule by time and days of the week
- Lockable UI
- Operation mode: cool/heat/auto/fan



LVM CENTRALIZED CONTROLLER

VOCTRL15P-1

- Centralized monitoring and control for up to 320 systems, or a maximum of 960 outdoor units and 2,560 indoor units.
- Available in 15-inch touchscreen
- Standard with web access
- Energy monitoring to see the exact price by kilowatt-hour (kWh) by indoor unit/zone or group



PROGRAMMABLE WIRED CONTROLLER

VOSTAT51P

- Built-in occupancy sensor with options for setback
- Built-in humidity sensor with humidity control options for maximum comfort control
- Auto-detects indoor unit model and capacity
- Daily, 5+2, 5+1+1, 7-day, and customer holiday programming options



SIMPLE WIRED CONTROLLER

VOSTAT54P

- Easy-to-read backlit display for setpoint and room temperature
- Control up to 16 indoor units from a single controller
- View sensor readings, EXV position, and system codes



WIRELESS REMOTE CONTROLLER

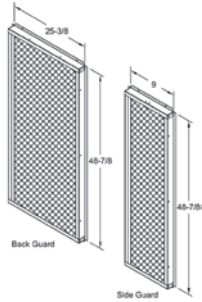
VOSTAT52P

- Control setpoint, fan speed, mode, and louver swing
- Configurable for Fahrenheit or Celsius
- Easy-to-read backlit LCD display

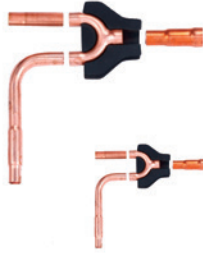
BACnet is a registered trademark of ASHRAE. LonWorks is a registered trademark of Echelon Corporation.

SYSTEM ACCESSORIES

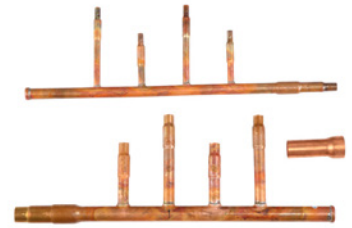
NexGen Mini-VRF outdoor and indoor units are available with a variety of optional accessories that offer added application flexibility, along with greater efficiency and functionality.



**MINI-VRF
HAIL GUARDS**
V8GARD11S11



**Y-BRANCH UNITS
(INDOOR AND OUTDOOR)**
V8ODBP**/V8IDBP**



HEADER KIT
V8HDRK**

SOLUTIONS FOR CUSTOMIZED COMFORT

Don't just choose a NexGen product—choose a NexGen® Commercial Comfort System.

These complete packages of HVAC solutions provide tools to create a healthy and comfortable environment.

PACKAGED UNITS

- Emergence® Rooftop Units
- Landmark® Rooftop Units
- Raider® Rooftop Units
- Accessories

VRF

- Outdoor Units
- Indoor Units
- Controls
- Accessories

HEATING

- Unit Heaters
- Duct Furnaces
- Furnaces

SPLIT SYSTEMS

- Elite® Series Large and Small Split Systems
- T-Class™ Air Conditioners/
Heat Pumps
- Air Handlers
- Indoor Coils

COMMERCIAL CONTROLS

- Systems Integration Solutions
- Commercial Thermostats

MINI-SPLIT SYSTEMS

- Heat Pump Mini-Splits
- Low Ambient Heat Pump Mini-Splits
- Air Conditioning Mini-Splits
- Indoor Units
- Controls

INDOOR AIR QUALITY

- Dedicated Outdoor Air System™
- Humiditrol® Dehumidification
System
- Demand Control Ventilation
- Air Filters
- UVC Lamps